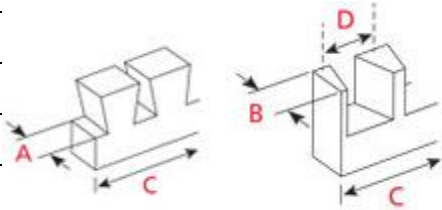


Leigh D4R Pro Technical Specifications

CAPACITIES

Through Dovetails

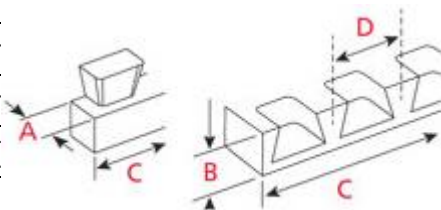
	MIN	MAX
A Tail Board Thickness	1/8" [3mm]	1" [25mm]*
B Pin Board Thickness	1/8" [3mm]	1-1/4" [32mm]
C Board Width	1" [25mm]	24" [610mm]
D Pin Centers	1" [25mm]	



* 1-1/4" [32mm] with 2-step process

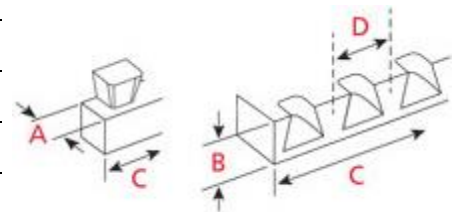
Half-Blind Dovetails

	MIN	MAX
A Tail Board Thickness	1/4" [6mm]	1-1/2" [40mm]
B Pin Board Thickness	7/16" [11mm]	1-1/2" [40mm]
C Board Width	1" [25mm]	24" [610mm]
D Pin Centers	1" [25mm]	



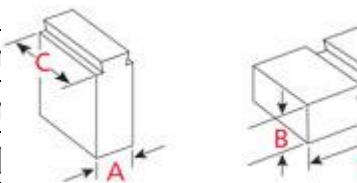
Single Pass Half-Blind Dovetails

	MIN	MAX
A Tail Board Thickness	7/16" [11mm]	1-1/2" [40mm]
B Pin Board Thickness	5/16" [8mm]	1-1/2" [40mm]
C Board Width	2-3/16" [55mm]	13" [330mm]
D Pin Centers	1-3/32" [27mm]	1-3/32" [27mm]



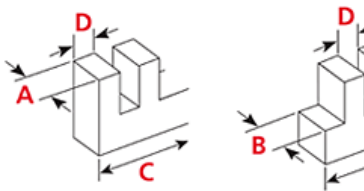
Sliding Dovetails

	MIN	MAX
A Tail Board Thickness	1/4" [6mm]	1-1/2" [40mm]
B Socket Board Thickness	9/32" [7mm]	1-1/2" [40mm]
C Board Width	2-3/16" [55mm]	24" [610mm]



Box Joints (Finger Joints)

	MIN	MAX
A Pin Board Thickness	1/8" [3mm]	1" [25mm]
B Socket Board Thickness	1/8" [3mm]	1" [25mm]
C Board Width	1-1/8" [29mm]	16-17/32" [420n
D Pin and Socket Sizes	3/8" (9.5mm)	3/4" (19mm)



JIG SIZE

Length: 33" [840mm]
Height: 9" [230mm]
Depth: 11" [279mm]

Weight: 23 lbs. [10.5 kg]
Package (carton) size: 36" x 8" x 8"
[914mm x 203mm x 203mm]

STANDARD JOINERY

Variably Spaced Through Dovetails
Variably Spaced Half-Blind Dovetails
Single Pass (fixed spaced) Half-Blind Dovetails
Sliding Dovetails
Rabbeted Half-Blind Dovetails
Finger (Box) Joints, 3/8" and 3/4"
Inlaid Dovetails
End-on-End Dovetails
Asymmetrical Joints (Through and Half-Blind)

Simple Angle Joints
Obtuse Angle Joints
Acute Angled Joints
Compound Angled Joints
Needle Pins
Shelf Holes and Notches

With Optional Templates:

Finger (Box) Joints, 11 sizes
Isoloc Joints, 6 patterns
Multiple Mortise & Tenon Joints